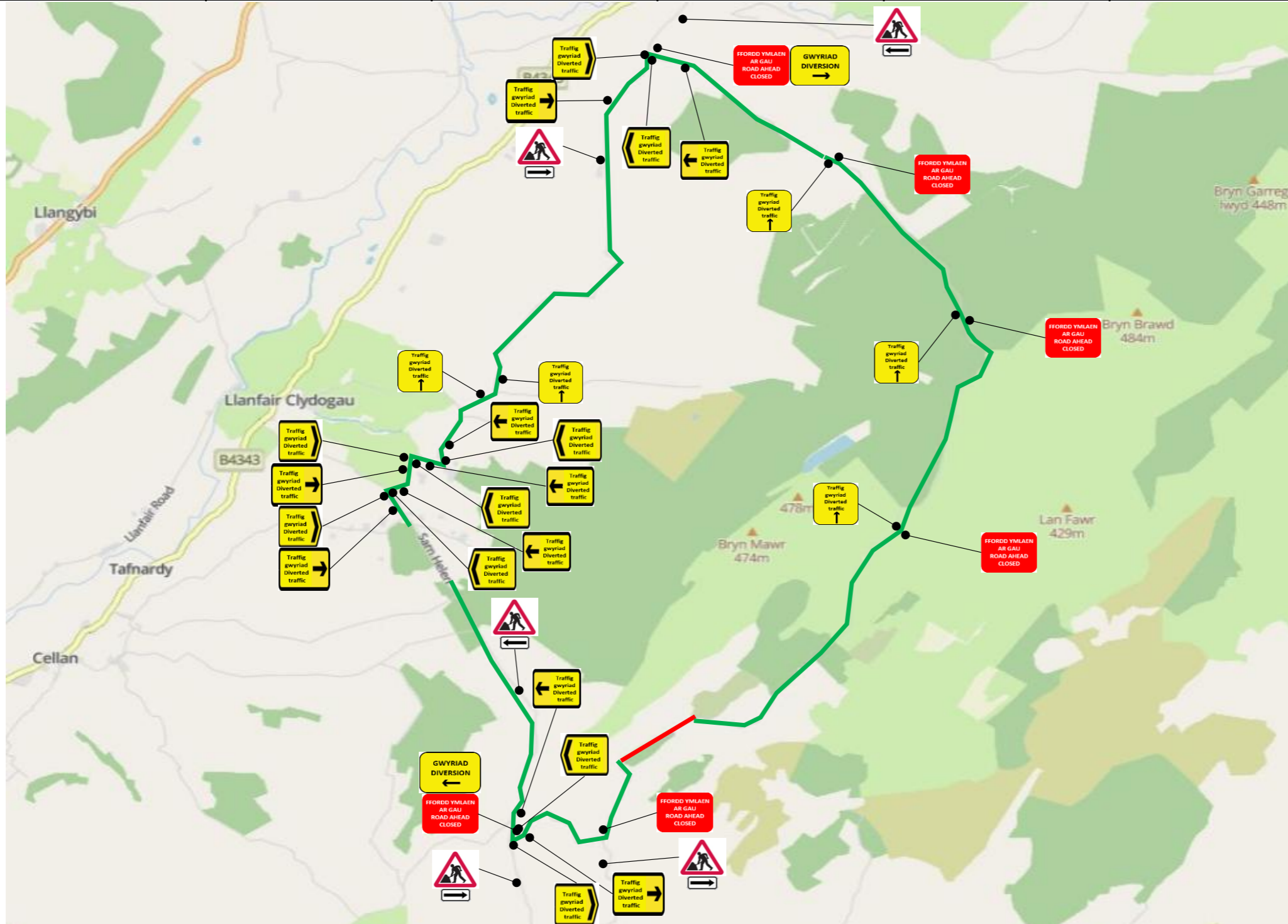
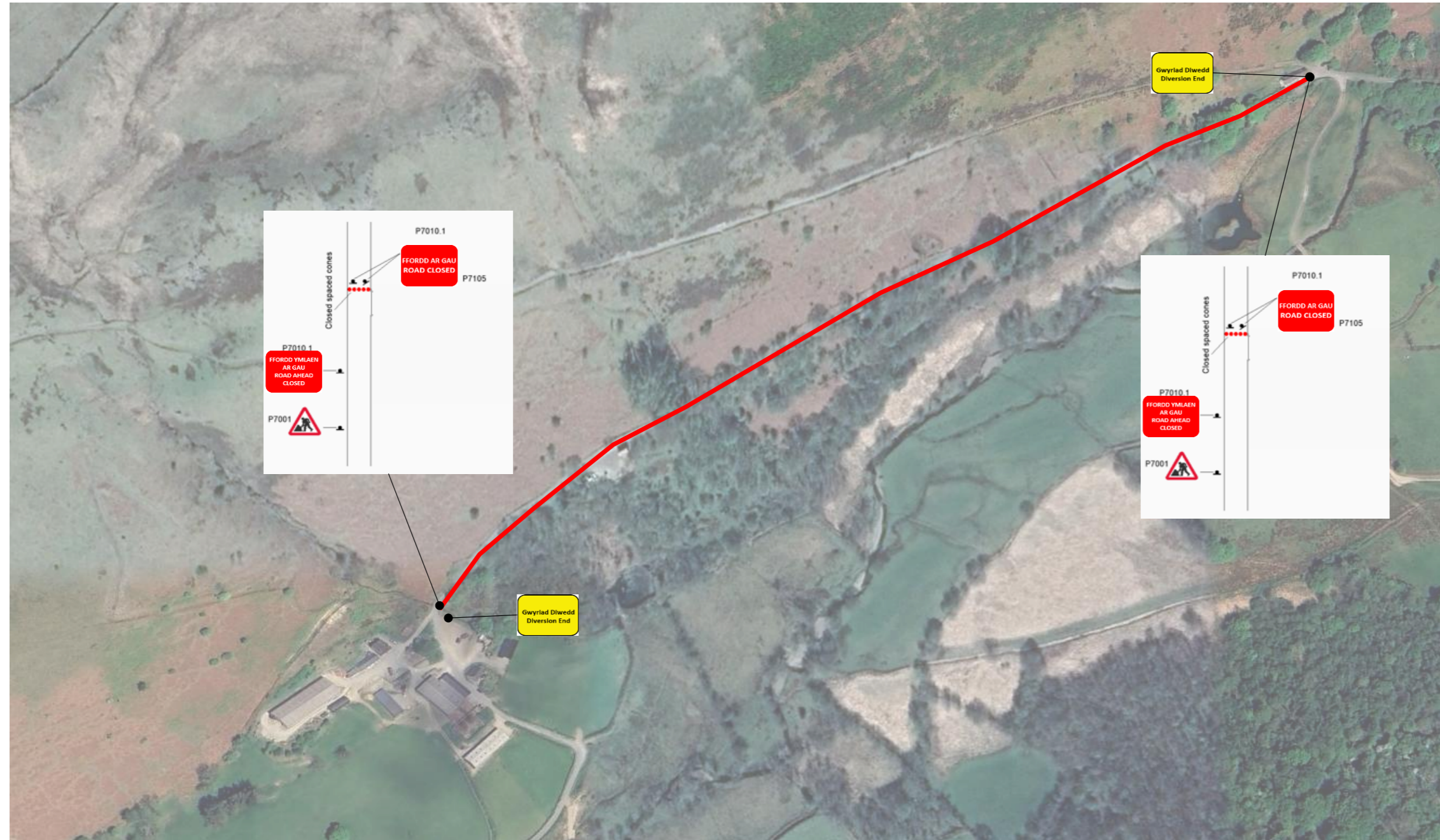


1	2	3	4	5	6	Diversion Route
---	---	---	---	---	---	-----------------



7	
8	
9	
10	

Drawing number	34253
Date drawn	09/01/2026
Drawn by	JD
Approved by	KL



Businesses & Public Areas			
1			
2			
3			
4			
5			
6			
7			
8			

ROAD CLOSED ACCESS ONLY		GWYRIAD DIVERSION ←	1
FFORDD AR GAU ROAD CLOSED	2	GWYRIAD DIVERSION →	1
FFORDD YMLAEN AR GAU ROAD AHEAD CLOSED	8	Traffic gwyrliad Diverted traffic →	5
Business open as usual		Traffic gwyrliad Diverted traffic ↘	5
A		Traffic gwyrliad Diverted traffic ↙	5
⚠	7	Traffic gwyrliad Diverted traffic ←	5
		Traffic gwyrliad Diverted traffic ↑	5
		Gwyrliad Diwedd Diversion End	2

Diversion Route		
U4090 From Ffarmers, Llanwrda47206873		
U4095 From, Ffarmers, Llanwrda47206874		
Tyntcornel - U4090, Ffarmers, Llanwrda47206621		
U4101 From, Ffarmers, Llanwrda47206878		
C1293 From Carn Helen To The Cattle Grid At Lluesycw...47108439		
U1660 From The Junction Of The B4343 To The Junction...47108447		
U1656 From The Junction Of The U1655 To The Junction...47108413		
U1655 From The Junction Of The B4342 Joining Green R...47108402		
U1654 From The Junction Of The U1655 To The End Of T...47108391		
U1519 From Esgair Garn To The Junction Of The U1654,...47100913		
U1519 From The Junction Of The U1518 To Esgair Garn,...47100912		
U1518 From Llanddewi Brefi To The Entrance Of The Es...47101462		
U1518 From The Entrance To Esgair Goch Forestry To T...47101463		
U1518 From The Track Entrance Near Waun Cynydd To Th...47101464		
U4090 From Ffarmers, Ffarmers, Llanwrda47206873		
Data maintained by: Carmarthenshire County Council		

Street	U4090 From Ffarmers		
Town	Ffarmers, Llanwrda		
USRN	47206873	Post Code	SA19 8PQ
	Address		Co-ordinates
Start	U4090 From Ffarmers		265315 , 247789
End	U4090 From Ffarmers		265949 , 248180
Type of restriction requested	Road closure	Duration	Over 5 Days
Can pedestrian access through the site be maintained			YES
Can access for cyclists and equestrians be maintained through the site?			YES
Can emergency services gain access			YES
Can public / school busses gain access through the site			NO

Legend	
A	Access to residential frontages
B	Access to residential frontages and businesses
⚠	Manned Closure
— (Green)	Proposed Diversion
— (Red)	Proposed Closure

Closure Length	750.00	Metres
Diversion Length		Km
Drawing number	34253	
Date drawn	09/01/2026	
Drawn by	JD	
Approved by	KL	